

DIRECTIONS FOR USE

ART. S8321

ELBOW BRACE WITH ADDITIONAL FIXATION

- Provides support and relieves pain of stiff, swollen or injured elbows and strained muscles in forearm during activities.
- Minimizes risk of future injuries and instability. Provides compression on weak or overstressed elbow.
- Separable design and adjustable velcro fasteners ensure comfortable fit and stabilization during activities. Provides easy application and maximum support.
- Additional round pressure point offers extra pressure on muscle in elbow.
- Aeroprene material provides shock absorption, dynamic compression and better breathability during prolonged use.
- Universal size (one size fits most).
- Fits both left and right arms.

Elbow brace provides adjustable compression and support to the elbow joint. It helps in case of repetitive sports injuries such as tennis and golfer's elbow by reducing excessive movements at the inner and outer sides of the joint. The support can also be used for recovery and during rehabilitation following surgery, trauma or injury.

- Provides support and relieves pain from stiff, swollen or injured elbows and strained muscles in forearm during activities.
- Helps reduce pain due to tendonitis and bursitis.
- Breathable neoprene keeps joint warm to improve healing and provides micro-massage effect which improves blood circulation and reduces elbow joint edema.
- Inner layer made of soft cotton fabric for comfort.

Indications for use:

Traumas, injuries, sprain of elbow joint ligaments. Prevention from development and exacerbation of inflammatory elbow joint diseases (arthritis, tendinitis, tendovaginitis). Pain syndrome by chronic degenerative elbow joint diseases (arthrosis and osteoarthritis). Injuries prevention during sports activities, and job strain on the joint.

- The lower part of forearm support is additionally fixed with Velcro-fastened band. This peculiarity prevents from slipping down and provides additional massage effect on the upper third of the forearm.

Contraindications:

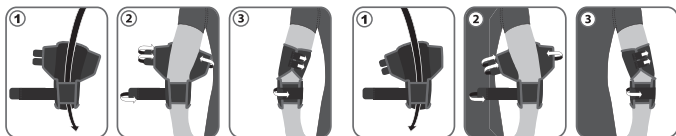
Skin local diseases, individual intolerance of the raw material components.

Dimensions	Sizes	Max deviation
	UNIVERSAL SIZE	
Elbow circumference, cm	24 - 30	± 1,0 cm

How to get it on:

for right hand

for left hand



Maintenance:

Wash with mild detergents at temperature no higher +35°C. Don't rub or wring out during washing and rinsing. Dry up away from sources of heat. Don't iron. Don't bleach. (Don't use chlorine-containing bleaching detergents). Don't use dry-cleaning.

Precautions:

Use the product for its intended purpose only. The schedule or time of wearing can be changed upon your doctor's advice only. It is not recommended to wear the product within 30 minutes after application of local warming ointments.

Contents: cotton - 15%, aeroprene - 60%, polyester - 20%, latex - 5%.

Storage conditions: store in dry place at temperature from +5°C to +40°C. Keep away from direct sun rays.

Manufacturing date: see on packaging.

Size: universal size.

Medtex Swiss Ltd, 15 Konservna str., Gabrovo, Bulgaria 5300

tel.: +359 888 059 356, e-mail: info@medtex-swiss.ch,

medpack-group.com, medtex-swiss.ch, dr-frei.com

Dr. Frei is a registered Trademark of FreiCare Swiss AG, Switzerland. A Swiss Brand.