

DIRECTIONS FOR USE

WRIST BRACE WITH THUMB FIXATION

ART. S8555

- Brace features the removable metal splints for fixation and stabilization of the wrist and thumb in abduction position.
- Support and protection for athletic and work activities.
- Provides firm fixation and compression of the radiocarpal joint and thumb.
- Anatomically contoured metallic stiffening plates and additional straps provide reliable stabilization of the joint and thumb and give greater stability.
- The inner layer made of soft cotton fabric for comfort.
- Universal size (one size fits most).
- Designed separately for left and right hands.

Indications for use:

Brace is used at wrist injuries, ligament sprains, arthrosis, arthritis, bursitis, synovitis, at rehabilitation stage after plaster removal as well as prevention of arthritis, bursitis, tendovaginitis and their exacerbation. It is intended for complete fixation of radiocarpal joint, provides warming and equal compression.

The brace is strengthened with rigid metallic insert that completely limits motions of the radiocarpal joint. The adjustable strap provides additional compression around the wrist if needed which can help encourage correct alignment of the carpal bones and therefore to reduce inflammation in the wrist, which is useful in the management of carpal tunnel syndrome.

The first carpometacarpal and/or metacarpophalangeal joints fixation. Injuries, sprains, luxations of the first carpometacarpal and/or metacarpophalangeal joints. Carpometacarpal joint of the thumb laxity.

Carpometacarpal joint of thumb finger arthrosis, arthritis.

Rehabilitation after operative

measures on the first carpometacarpal and/or metacarpophalangeal joints. Prevention from repeated traumas of articular-ligamentous apparatus of the first carpometacarpal and/or metacarpophalangeal joints.

- Provides reliable fixation and compression of the radiocarpal joint.
- The metallic stiffening plate and additional straps ensure reliable stabilization of the joint.
- Specially designed detachable metallic splint provides thumb abduction.
- Detachable splints provide step-by-step brace use at all stages of rehabilitation.
- Anatomic shape is comfortable for daily use.

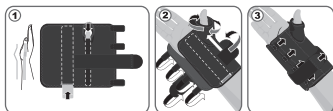
Contraindications:

Skin local diseases, individual intolerance of the raw material components.

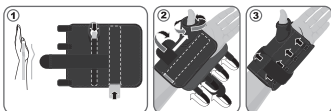
Dimensions	Sizes	Max deviation
	UNIVERSAL SIZE	
Wrist circumference, cm	15 - 22	± 1,0 cm

How to get it on:

for right hand



for left hand



Maintenance:

Wash with mild detergents at temperature no higher +35°C. Don't rub or wring out during washing and rinsing. Dry up away from sources of heat. Don't iron. Don't bleach. (Don't use chlorine-containing bleaching detergents). Don't use dry-cleaning.

Precautions:

Use the product for its intended purpose only. The schedule or time of wearing can be changed upon your doctor's advice only. It is not recommended to wear the product within 30 minutes after application of local warming ointments.

Contents: cotton - 15%, aeroprene - 60%, polyester - 20%, latex - 5%, metallic stiffeners.

Storage conditions: store in dry place at temperature from +5°C to +40°C. Keep away from direct sun rays.

Manufacturing date: see on packaging.

Size: universal size.

Medtex Swiss Ltd, 15 Konservna str., Gabrovo, Bulgaria 5300

tel.: +359 888 059 356, e-mail: info@medtex-swiss.ch,

medpack-group.com, medtex-swiss.ch, dr-frei.com

Dr. Frei is a registered Trademark of FreiCare Swiss AG, Switzerland. A Swiss Brand.